

18 October 1994

Kenton Spading
1586 Grotto St. N.
St. Paul, Minnesota 55117

Richard Gillespie
Executive Director, TIGHAR
2812 Fawkes Drive
Wilmington, DE
19808 USA

Ric,

This cover letter transmits information regarding some archival and general research that was done in St. John's, Newfoundland.

On 23 September 1994, Jim Carucci and me visited: the map library at the Memorial University of Newfoundland; the Provincial Archives of Newfoundland and Labrador; and the Department of Environment and Lands, Air Photo and Map Library. Our goal was to research changes in geographic features (e.g. water levels/pond features) and place-names on the Cape Shore of Newfoundland.

We discovered two topographic maps with scales that were useful for our purposes (1:50,000 and 1:250,000). Both map series are still in print and are currently in their 3rd editions. In an effort to research the aforementioned changes, we endeavored to find copies of editions 1 and 2 for each scale. I will list my observations of them separately. I will reference Goose Pond (47° 2.548'N, 53° 56.152' W) (our Gull Pond), Great Gull Pond, Turfy Pond, English Pond, and Hickeys Pond (and a few others) as examples of changing map features and place names. All of the ponds are labelled on the edition 3 versions of the maps. The maps were found at Memorial University map library (709-737-8892). The University also has copies of the aerial photos taken in 1966. Copies of portions of selected maps are attached to this letter as enclosures.

EDITION 1, 1:50,000, Placentia, 1 N/4 west half (see Enclosure 1)
(From aerial photos in 1948, printed in 1955)

1. No island appears in the Goose Pond (our Gull Pond)
2. No island appears in the Great Gull Pond,
however, emergent rocks are indicated (x's).
3. Turfy Pond, English Pond and Hickeys Pond are not labelled.

EDITION No. 2, 1:50,000, Placentia, 1 N/4 (see Enclosure 2)
(From aerial photos in 1966, culture check 1968, printed in 1971)

1. No island appears in the Goose Pond (our Gull Pond)
2. No island OR emergent rocks appear in the Great Gull Pond.
3. Turfy Pond is labelled
4. English Pond and Hickeys Pond are not labelled

EDITION No. 3, 1:50,000, Placentia, 1 N/4 (see Enclosure 3)
(From aerial photos in 1980, culture check 1981, printed in 1985)

1. An island **DOES** appear in the Goose Pond (our Gull Pond)
2. An island **AND** emer. rocks appear in the Great Gull Pond.
3. Turfy Pond, English Pond and Hickeys Pond are **ALL** labelled

I studied 4 maps covering 4 adjacent geographic areas in the 1:250,000 series. The maps are labelled: St. John's, Trepassey, St. Lawrence, and Belleorama. I did this due to the fact that radical changes in place names was noted as compared to the Edition 3, 1:50,000, Placentia map. As a result I wanted to get a look at the surrounding area to see what other changes may have occurred. The maps cover a large portion of Newfoundland and are arranged as follows:

Belleorma	St. John's
St. Lawrence	Trepassey

EDITION 1, 1:250,000, St. John's (No Copy Attached)
(Compiled from large scale maps in 1956, printed in 1962)

EDITION 2, 1:250,000, St. John's (No Copy Attached)
(Aerial photos in 1966, culture check 1968-69, printed in 1971)

Edition 1 and 2 of this map were identical in the area of the Goose Pond (our Gull pond) (47° 2.548'N, 53° 56.152' W). Highway 92 on the Edition 2 map terminates just west of Cape Dog. The Great Gull Pond is the only pond in the area that is labelled (on both maps).

EDITION 3, 1:250,000, St. John's (see Enclosure 4)
(Updated using satellite imagery, 1986, printed in 1990)

1. Highway 92 is complete on this map.
2. The Great Gull Pond is now labelled **East End** Gull Pond.
3. The Goose Pond (our Gull Pond) is now labelled as Gull Pond and emergent rocks are indicated (island).
4. English Pond and Hickeys Pond are labelled. Turfy Pond is not.
5. ANOTHER Gull Pond appears south of Hickeys Pond

EDITION 1, 1:250,000, Trepassey (No Copy Attached)
(Compiled from large scale maps in 1955-58)

EDITION 2, 1:250,000, Trepassey (No Copy Attached)
(Aerial photos in 1966, printed in 1970)

Edition 1 and 2 in the Avalon Peninsula area were virtually identical. Edition 2 varied slightly. Very few if any of the inland geographic features are labelled on either map.

EDITION 3, 1:250,000, Trepassey (see Enclosure 5)
(Updated using satellite imagery, 1986, printed in 1989)

1. Highway 92 is complete on this map.
2. The lower end of the Gull Pond which is south of Hickeys Pond can be seen.
3. Many inland geographic features are now labelled.

EDITION 1, 1:250,000, St. Lawrence (see Enclosure 6)
(Compiled from 1948-49 air photos, printed in 1958)

EDITION 2, 1:250,000, St. Lawrence (see Enclosure 7)
(Aerial photos in 1966, printed in 1970)

Edition 1 and 2 in the Avalon Peninsula area were virtually identical. Most of the inland geographic features are labelled on both maps.

EDITION 3, 1:250,000, St. Lawrence (see Enclosure 8)
(Updated using satellite imagery, 1986, printed in 1989)

A number of the geographic names appear on this edition that were not on edition 2. Most notably, ANOTHER **Goose Pond** appears at the **HEADWATERS** of a tributary to the **Branch River** called Black Hummock Gully. This pond was not labelled on either the edition 1 or 2 map (see enclosures 6 and 7). I have been told that there is an additional Goose Pond in the area which is simply a wide spot in the Branch River. These are in addition to the Goose Pond shown on the 1:50,000 Placentia map (our Gull Pond).

EDITION 1, 1:250,000, Belleorma (No Copy Attached)
(Compiled from large scale maps in 1960, printed in 1962)

EDITION 2, 1:250,000, Belleorma
(Aerial photos in 1966, printed in 1970) (see Enclosure 9)

Edition 1 and 2 in the Avalon Peninsula area were virtually identical. I was not able to locate an edition 3 of this map. I ran out of time.

The above information proves nothing. In addition, it is not meant to be an exhaustive research effort into historical maps of the Avalon Peninsula. Time constraints did not allow me to do this.

It does, however, illustrate how features, and geographic place names, on maps of the Avalon Peninsula, change with time. Ponds have one name on an early map and a completely different name on later editions. Geographic features which appear and disappear from the maps (islands/rocks) only add to the confusion. My experience has been that maps confuse laymen regardless of how familiar they are with a particular area. Combining fragile human memories with the inability of the average person to be able to orientate themselves on a map, creates a situation that is not easy to sort out. Add to this the dynamic nature of the maps and it only compounds the situation.

At the Provincial Archives we met with the Acting head of Reference Services and Mr. Anthony P. Murphy, Chief Archivist of Cartographic and Government Records (709.729.0496). We were directed to a couple of different sources of historical maps and photos including: The Provincial Archives of Newfoundland and Labrador Map Collection, (PANLMC) and British and American Hydrographic Maps. Both of these collections are stored off-site. Requests for retrievals are processed on Tuesdays and may be submitted by mail.

I skimmed through the PANLMC Finding Aid to Manuscript Groups (two, 3-ring binders). The collection is comprised of maps of Newfoundland and Canada and engineering drawings of buildings and construction projects. Most of the information appeared to have been donated to the archives by Newfoundland families and corporations/companies. I did not have time to thoroughly search the index. I cannot say for sure if records from the company that Mr. Noonan worked for were in the collection (many companies were listed). I made note of the following map groups which seemed interesting (there may be more):

**Inventory
Manuscript
Number**

Description

5	Map of Newfoundland, 1949
7	Old Newfoundland Road Maps
8	Map of Maritime Provinces
15	Tracing of Gull Pond from Aerial Photo
	Roads in Newfoundland
	Map of Newfoundland showing areas flown by various agencies and companies
	Map of Newfoundland showing caribou and Moose hunting areas
	Map of Newfoundland
39	Maps of Newfoundland, Dept of Natural Resources
	Crown Land and Surveys, 1947, 16 miles = 1 inch
46	Map of Newfoundland, Dept. of Agriculture and Mines
	1914, 5 miles = 1 centimeter
	Map of Newfoundland from recent survey
	1925, 5 miles = 1 centimeter
65	Miscellaneous Maps
107	Map of Newfoundland's South Coast area, May 1825

Our last stop was the Department of Environment and Lands, Air Photo and Map Library. We spoke to Mr. Ron Penny (709.729.3305). He stated the following:

1. They do not keep old versions of maps. Their old maps are donated to the University Map Library.

2. Geographic place names in Newfoundland are chosen by the "Board of Names". When a map is being updated, the board sends a technician into the field to talk to the local populace. They are shown a map and asked to label the various features. Changes can then be made to the map if a majority of the local people request it. He was not sure if the board keeps a historical record. If they do, it would certainly be interesting to look at.

3. They have some of the aerial photos from the 1948 era work. They do not have the 1948 photos for the Avalon Peninsula. He suggested contacting their Ottawa office for that information.

On 23 September 1994 you (Ric) and me visited Mr. Lamont (Lal) Parsons at his home in Newfoundland. Lal called a friend of his (Mr. Ted Giannou) in an effort to research the origin of a rusty, all-steel Ultramar oil can that I found near the first pond downstream of our search area (Goose/Gull Pond). Mr. Giannou referred Lal to a gentleman named Thomas Munn who had spent a lot of time hunting in the vicinity of our search area during the 50's, 60's and 70's. Mr. Munn stated that he and a number of his friends purchased amphibious "Weasel's" from army surplus following World War II. The oil can could have been used to service one of those vehicles. Mr. Munn stated that his hunting group would drive the Weasels back into the remote country during the summer or fall on hunting and fishing trips. These vehicles would have been ideally suited to the terrain due to their amphibious nature. The country surrounding the Goose/Gull Pond (our Gull Pond) was an area they visited frequently. They would stay at a cabin (now burned) that was near the existing McGrath cabin (which is approximately 1 kilometer west of our pond, 2.5 kilometers west of St. Mary's Sugarloaf). Annual visits to the area in the 1950's, 60's and 70's were common. They stopped using the Weasels in the early 1970's after all terrain vehicles (ATV) were available. Apparently the area surrounding our pond was/is prime for partridge hunting.

Summary:

1. I am not suggesting that we were searching in the wrong pond. We certainly have reasons to believe cultural activity of some sort occurred within our search area. However, issues like the dynamic nature of the maps described here and the reference to Great Gull Pond in a letter to the government indicates that research into historical maps of the area is necessary.

2. Additional research should be conducted in England in regards to the Avro/Martin/Judge correspondence.

3. Additional effort should be put forth to obtain a sample of paint from the landing gear (White Bird) in France for comparison to paint on artifact 1-21-1.

4. The conversation with Mr. Munn indicates the pond site was not as inaccessible as previously thought. The existence of amphibious vehicles in the area presents many possibilities for the deposition of pieces of iron on land and in the water. The probability of a piece of iron/metal arriving at the pond by a Weasel is much greater than the chance of it falling out of the sky. It still, however, does not explain the alleged discovery of large pieces of metal in remote areas prior to WWII.

5. One of the local fisheries wardens told me that the government hired students to clean up debris around lakes and rivers in the 1980,s. The group stayed at McGrath's cabin near Gull/Goose pond. He did not know what the extent of their project area was.

6. I would not recommend additional field work at this time unless additional evidence comes to light to support the existing or a new hypothesis.

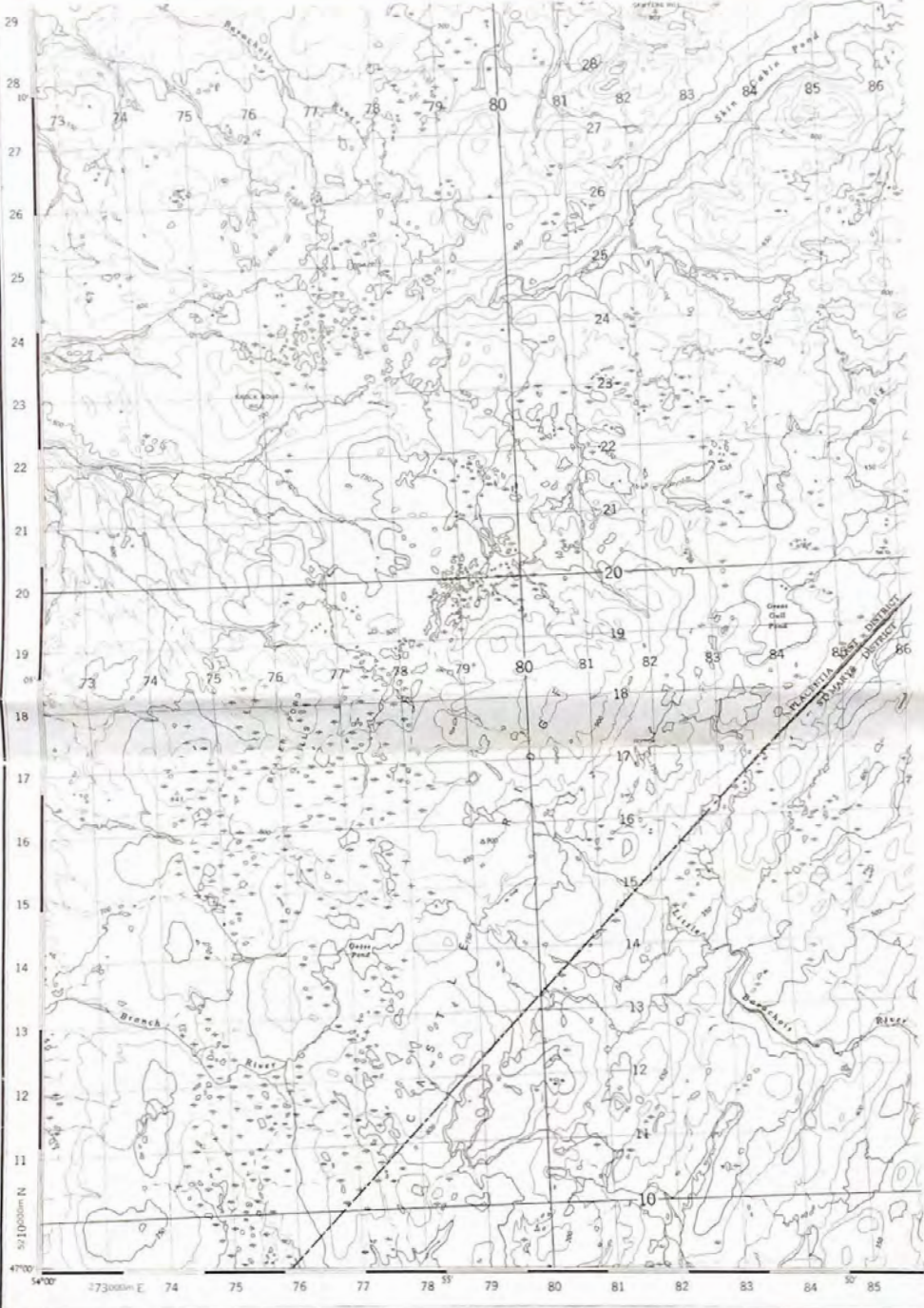
7. The decision to place a memorial monument at or near the Goose/Gull Pond indicating the possibility of a historical event occurring at that EXACT place needs careful consideration. There are still plenty of unanswered questions. A monument to all the lost trans-Atlantic aviators would be appropriate (in or near St. John's ??).

8. I hope you find the attached information useful. I can be reached at 612.488.8893 (home) or 612.290.5611 (work) if you have questions or comments.

Sincerely,

Kenton Spading

CF: Jim Carucci
Dave Scott
Jay Veith
Veryl Fenlason



Produced and printed by the Survey and Mapping Branch, Department of Mines and Technical Surveys, 1955, from air photographs taken in 1948.

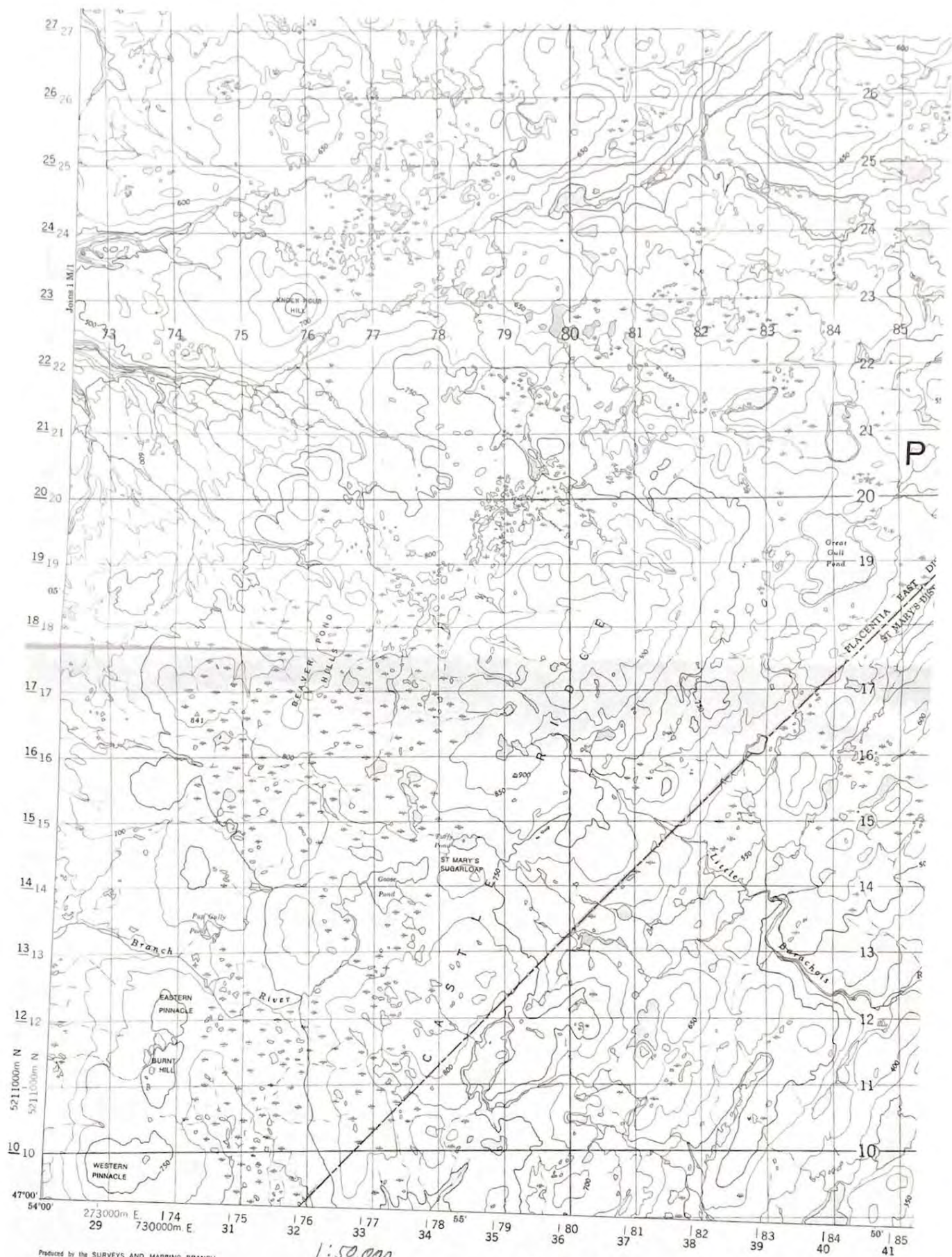
PLACENTIA 10% Reduction

1:50,000

1 N/4 West Half

Edition 1 ASE

Enclosure 1



Produced by the SURVEYS AND MAPPING BRANCH
DEPARTMENT OF ENERGY, MINES AND RESOURCES
Updated from aerial photographs taken in 1966. Culture check
1968. Printed 1971

Copies may be obtained from the Map Distribution Office,
Department of Energy, Mines and Resources, Ottawa.

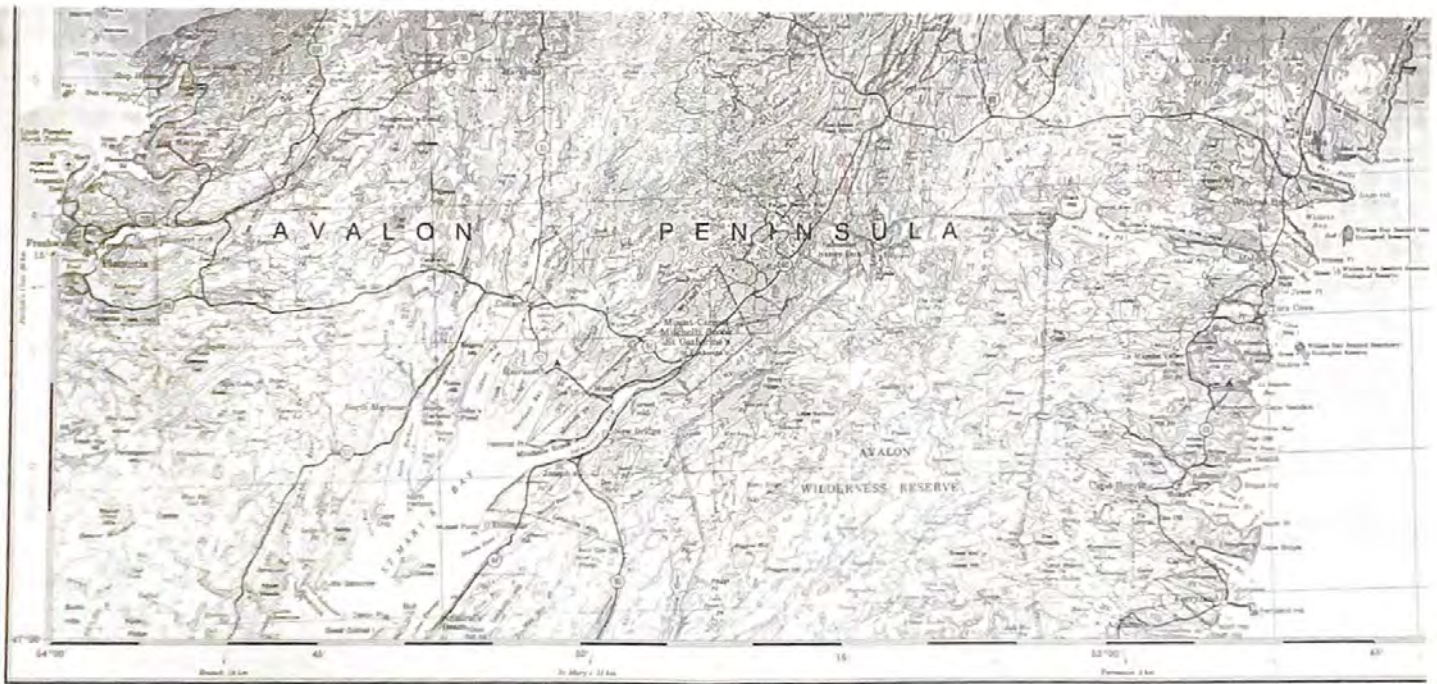
1:50,000

Placentia
1N/4
Edition 2

1% Reduction

Enclosure 2

Roads:	Roads:	Roads:
hard surface, all weather	pavée, toute saison	route, highway
hard surface, all weather	pavée, toute saison	2 chaussées sol
loose or stabilized surface, all weather	gravier aggloméré, toute saison	2 voies
loose surface, dry weather and unclassified streets	gravier, temps sec et rues hors classe	2 voies ou plus
cart track	de terre	
trail or portage	sentier ou portage	



Location of the Avalon Peninsula within the province of Newfoundland and Labrador.

Produced by the CANADA CENTRE FOR MAPS
 (Produced by the CANADA CENTRE FOR MAPS)
 (Produced by the CANADA CENTRE FOR MAPS)
 (Produced by the CANADA CENTRE FOR MAPS)

Information concerning this map and other maps
 published by the Canada Centre for Maps
 can be obtained from the Canada Centre for Maps
 in Ottawa, Ontario.

This map is not a legal document
 and should not be used for legal purposes.

ST JOHN'S NEWFOUNDLAND TERRE-NEUVE Edition 3

Scale 1:250 000 Echelle

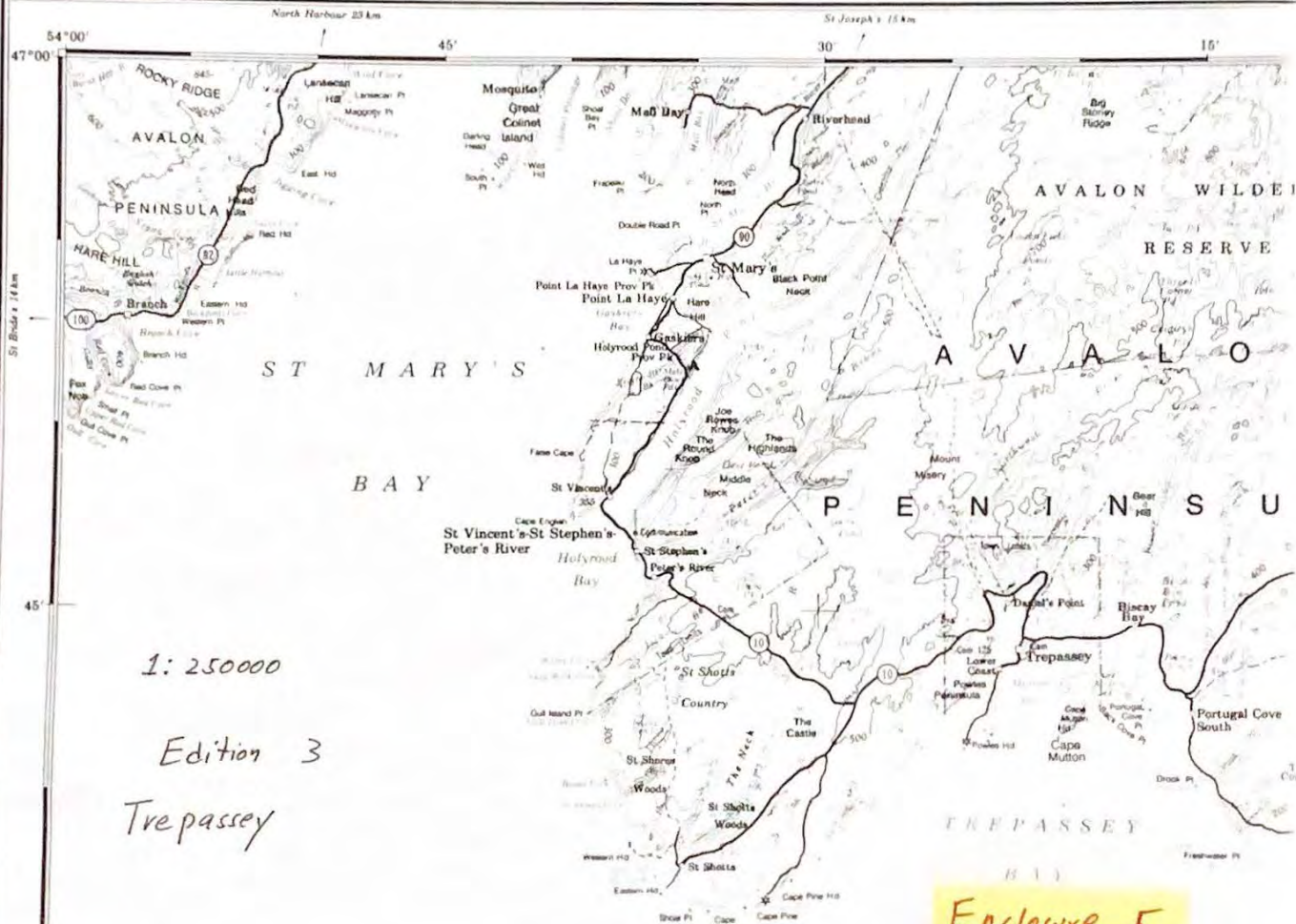


Scale 1:250 000 Echelle

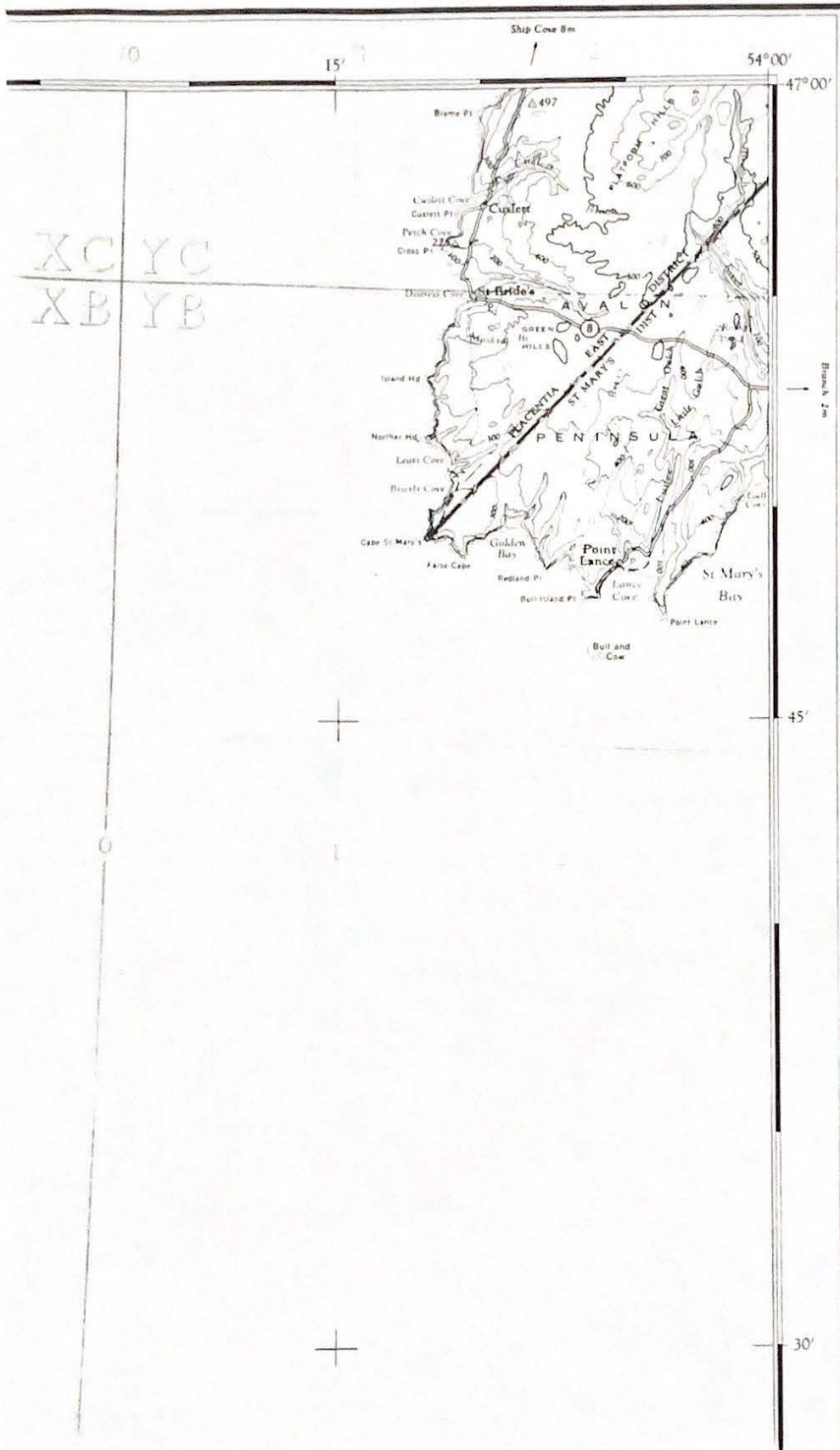
Scale 1:250 000 Echelle

Enclavure 4

EDITION 3



Enclosure 5



Refer to this Map as:-	1L EDITION 1 ASE SERIES A501
---------------------------	------------------------------------

1 : 250000

Edition 1
St. Lawrence

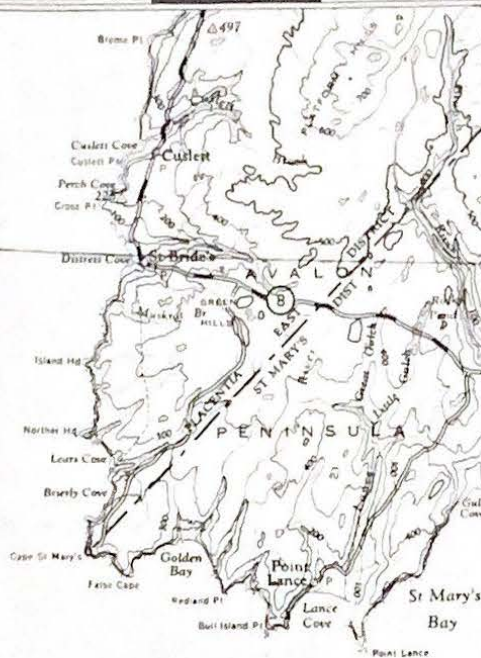
MEMORIAL UNIVERSITY
CANADIAN M
DEPOSITOR
NOT FOR CIRCULATION

Enclosure 6

Refer to this
Map as:

11
EDITION
SERIES

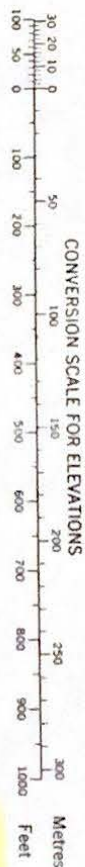
XC YC
XB YB



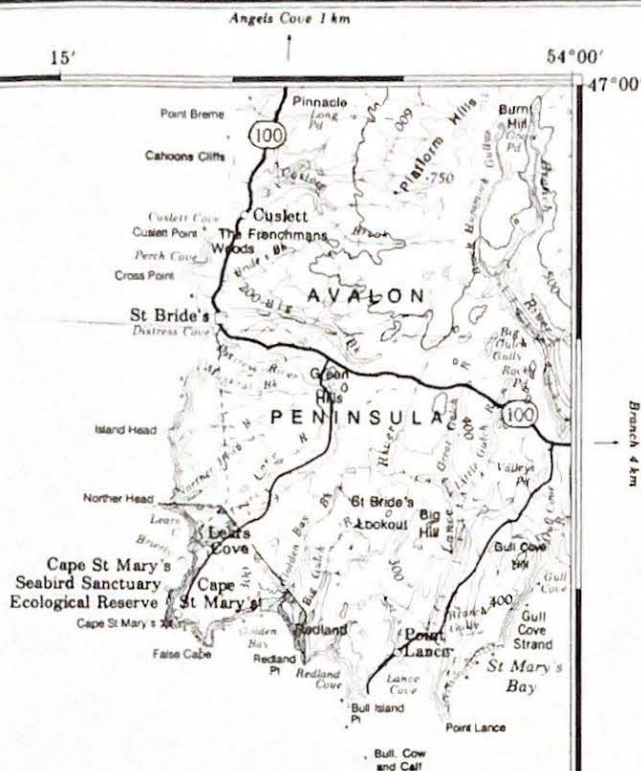
1: 250000

Edition

St. Lawrence



Enclosure 7



Military users refer to this map as Reference de cette carte pour usage militaire	SERIES	A 501	SERIAL
	MAP	1 L	CARTE
	ÉDITION	3 MCE	ÉDITION

1:250000



Enclosure 8

TEN THOUSAND METRE

