

These ironic contradictions were noticeable in all the letters and telegrams that reached Mr. Putnam, first at Oakland, then in his North Hollywood home.

A woman in Detroit sent a series of unique sketches which she called "human radio wave pictures," depicting Amelia Earhart dragging Captain Noonan ashore on a barren island. The woman, an architect with two university degrees, said she was impelled to draw the pictures by a power she could not explain. At the same time another correspondent airmailed a crude pencil sketch which she said was drawn by "the eye of science," moving her fingers. It showed Miss Earhart sprawled face down on a beach, dead.

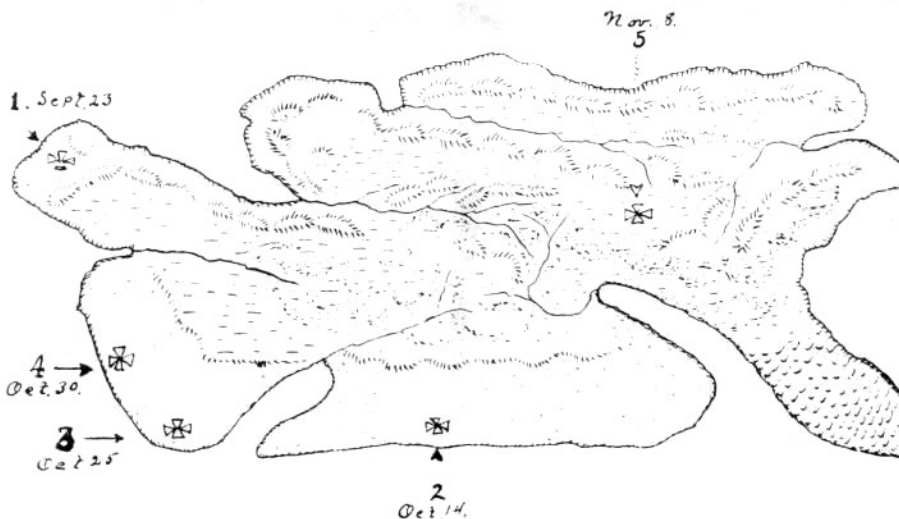
The messages came from every state, from Mexico, Canada, Great Britain and a dozen other countries. A clairvoyant in Miami "saw" Miss Earhart in a native village at Samoa and asked a reward for her information. Five prominent citizens of Denver "talked" to Miss Earhart in a seance and learned that she and Captain Noonan had been forced down on a volcanic island and were asphyxiated by sulphur fumes. A seer in Boston forwarded a 5,000-word transcript of her astral conversations with the lost flyers.

From an engineer in New Mexico came an incredible account of a dream in which he saw rescue boats approach of the wrecked *Electra*. He quoted Miss Earhart:

"We felt no uneasiness, thinking we



George Palmer Putnam spent thousands of dollars searching for his wife after her twin-engined Lockheed disappeared at sea. Above, they are planning fateful flight.



1. Sept. 23. I saw Amelia Earhart on a rock near the water, her clothes very shabby.

2. Oct. 14. Talked with Amelia several times, said tell George to come and get her. I don't know who she is.

3. Oct. 25. I saw Amelia on sand island, wearing her arms and hands up and down.

4. Oct. 30. I floated over the island, heard Amelia call from above but could not see her.

5. Nov. 8. Contacted Amelia twice, first time 12:40 A.M., again at 2:05 A.M., she is very happy, she was creeping along like she was trying to catch something.

The Los Angeles man who sent in the above sketch said he drew it in the dark. Below map are his comments on "visions" he had in which he saw AE. He couldn't locate island.

were among friends. But when our plane touched water, we were shot in the back of the head. Our plane and bodies were riddled of all valuables and the inhuman monsters sank the plane with our bodies."

The writer offered an explanation for the crime, saying: "This dream was so starkly clear I felt it my duty to tell you. When one considers the pirating done in the past and today with automobiles, trains and ships, it seems entirely reasonable. . . ."

A retired Los Angeles business man forwarded a diary of his spirit talks with Miss Earhart and a detailed map of an island he had seen in his visions. He had drawn it in the dark of night, but was never able to give an exact location.

In looking back through the bright pages of Amelia Earhart's adventurous life, George Putnam remembered something that might have explained the curious fervor of all those men and women who wanted to help in his hour of despair. It was simply that Amelia Earhart herself had a fragile psychic quality, some strange susceptibility to conditions beyond understanding. She rarely mentioned it to friends, never discussed it publicly. But whenever AE participated in mental telepathy or other psychic experiments to further her curiosity, observers were astonished at results. And yet she never invoked or followed the advice of countless clairvoyants and astrologers who besieged her at every stage of her great flights.

(Continued on page 76)